



Shaping the future



Community of bold thinkers

At Aalto University, science and art meet technology and business. We are building an innovative society through high-quality research, teaching and artistic activity.

Key figures

About
18 000
students

A total of **9 984** applicants sought admission to Aalto University in spring 2017 and approximately 15% of them were admitted.

Number of graduates in 2015:
260 doctoral degrees, **1 998** master's degrees,
1 970 bachelor's degrees and
310 graduates from the MBA and EMBA programmes



A staff of about 4,200 of which more than **400** are professors.

Foreign academics account for about **36%** of this total.

Our global success



number **7** among the best universities under 50 years of age in the world
(QS Top 50 under 50)

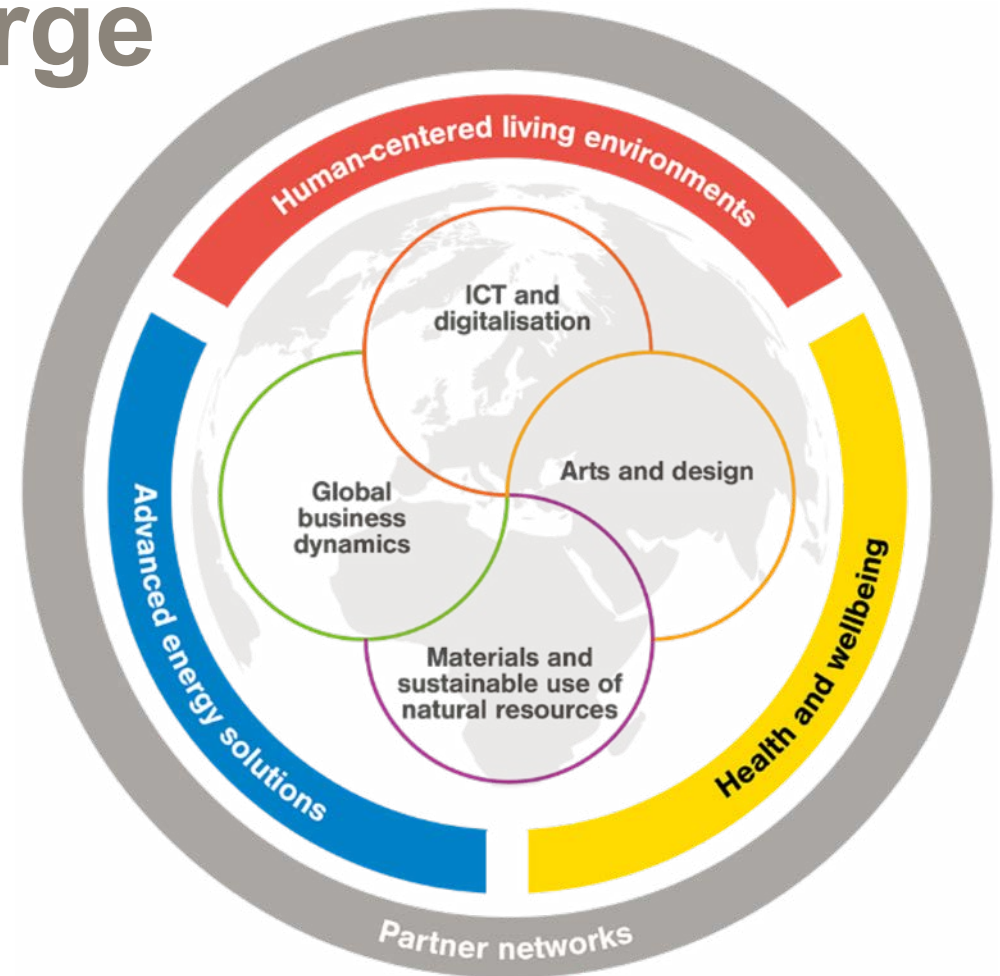
number **14** in the world in collaboration between the university and industries
(CWTS Leiden Industry Collaboration 2015)

number **2** among Nordic business schools
(Financial Times, European Business Schools 2016 Special Report)

number **3** in bachelor's programmes in fashion in the world
(Business of Fashion, Global Fashion School Rankings 2016)

Our task is to identify and solve major challenges facing society at large

The key areas of research help to make Finland more competitive, produce wellbeing and promote the creation of new innovations.



We educate game changers

Aalto University produces experts possessing the knowledge and skills required for building a sustainable society.



Promoting entrepreneurship



70 to 100

Companies are founded every year in our ecosystem

MIT has rated Aalto's innovation ecosystem among

the **top-5**

rising stars in the world

Entrepreneurship is a more popular career option than ever – in the last

four years, over **2 000** students have studied through the Aalto Ventures Program

50%

of Finnish startups that originate from universities come from the Aalto community

Head start with the Aalto *ecosystem*

AALTO
VENTURES
PROGRAM

A''
Aalto University
Start-Up Center

**G
R
D**

A?
Aalto University
Design Factory

Aaltoes

KIUIAS

**Fall
Up**

AENT
Aalto University
Developing Entrepreneurship

JUNCTION

Startup Sauna

startupilifers

SLUSH

New openings in teaching

A young man with short brown hair, wearing a grey sweater over a white collared shirt and blue jeans, is sitting cross-legged on a wooden floor. He is smiling broadly at the camera. Behind him is a wall made of stacked wooden planks, creating a warm, textured background.

Updated, more clearly structured and more extensive bachelor's and master's programmes

Optional minors outside the student's field of study

Novel learning environments, such as Design Factory

'A unique concentration in which something is happening all the time has grown around Design Factory and Startup Sauna.'

Pyry Taanila
designer and entrepreneur

At the forefront of research

The tenure track system has increased the number of professors and attracted international experts: More than half of the professors currently working at Aalto University have been recruited after 2010. About 30% of them are from outside Finland.





'I believe that the forest industry will save the Finnish economy – once again. With new innovations, the range of products that can be processed from wood will keep expanding. We can already make for example thread, clothes and, say, edible single-use dishes from wood.'

Katja Kortelainen

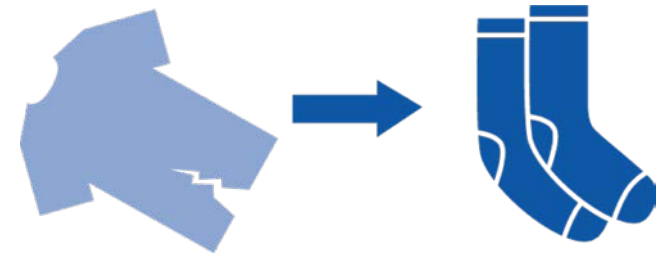
Master of Science in Bioproduct Technology

Innovation through collaboration



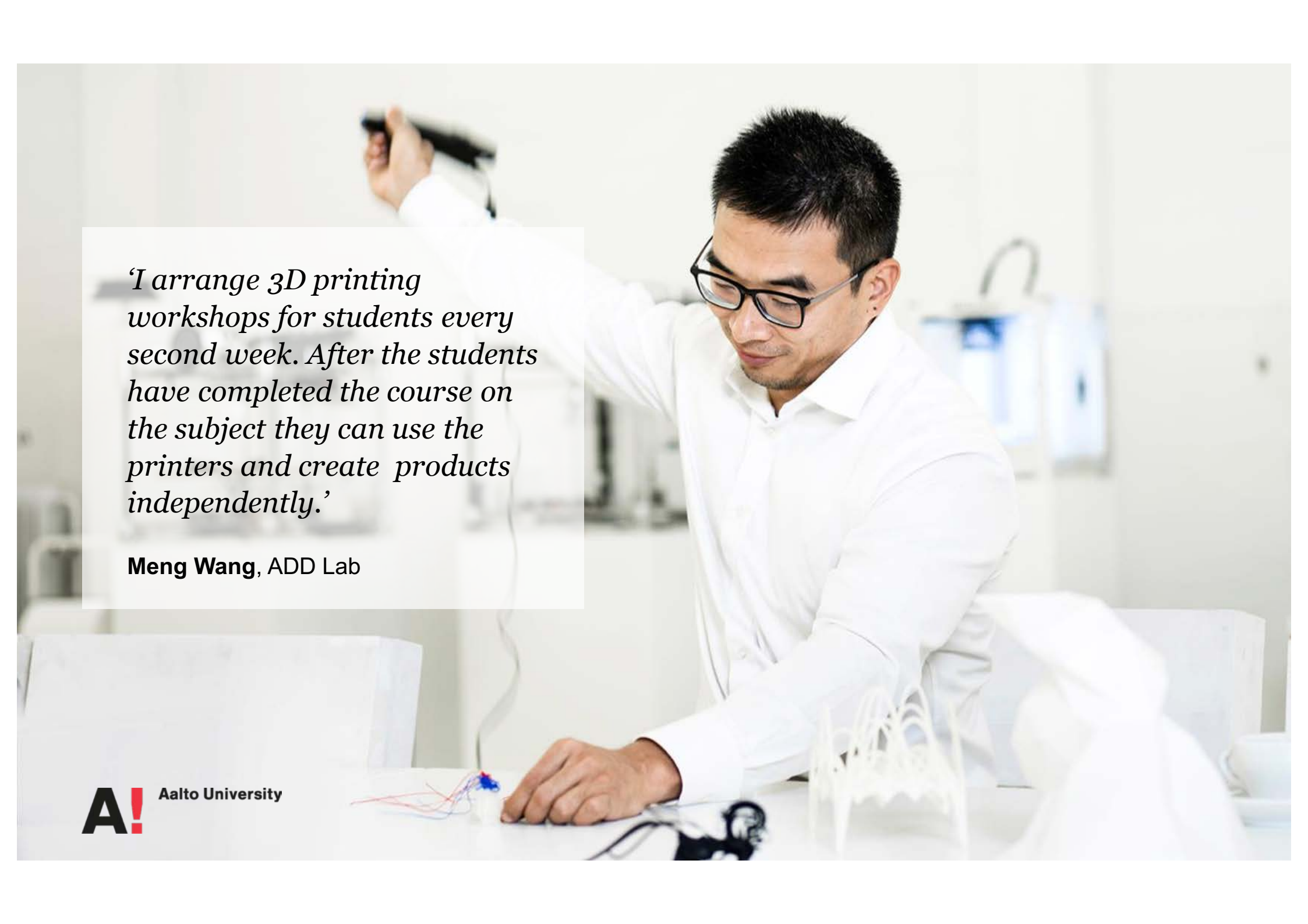
A revolutionary invention in heat conduction enables super powerful quantum computers.

The environmentally friendly Ioncell F method will boost cotton recycling.



Finland's first satellite was developed by students.



A man with short dark hair and glasses, wearing a white long-sleeved shirt, is working in a laboratory. He is leaning over a table, holding a small object in his right hand. On the table, there are several 3D printed white objects, including a complex lattice structure. In the background, there are shelves with various items and a computer monitor. The overall setting is a clean, modern laboratory.

'I arrange 3D printing workshops for students every second week. After the students have completed the course on the subject they can use the printers and create products independently.'

Meng Wang, ADD Lab

Added value through multidisciplinary approach

Aalto University Platforms bring together multidisciplinary and interdisciplinary research and teaching in specific thematic fields. The aim is to strengthen collaboration between the university and its stakeholders.

Aalto Materials Platform

Materials research

Aalto Digi Platform

Digitalisation

Aalto Living+

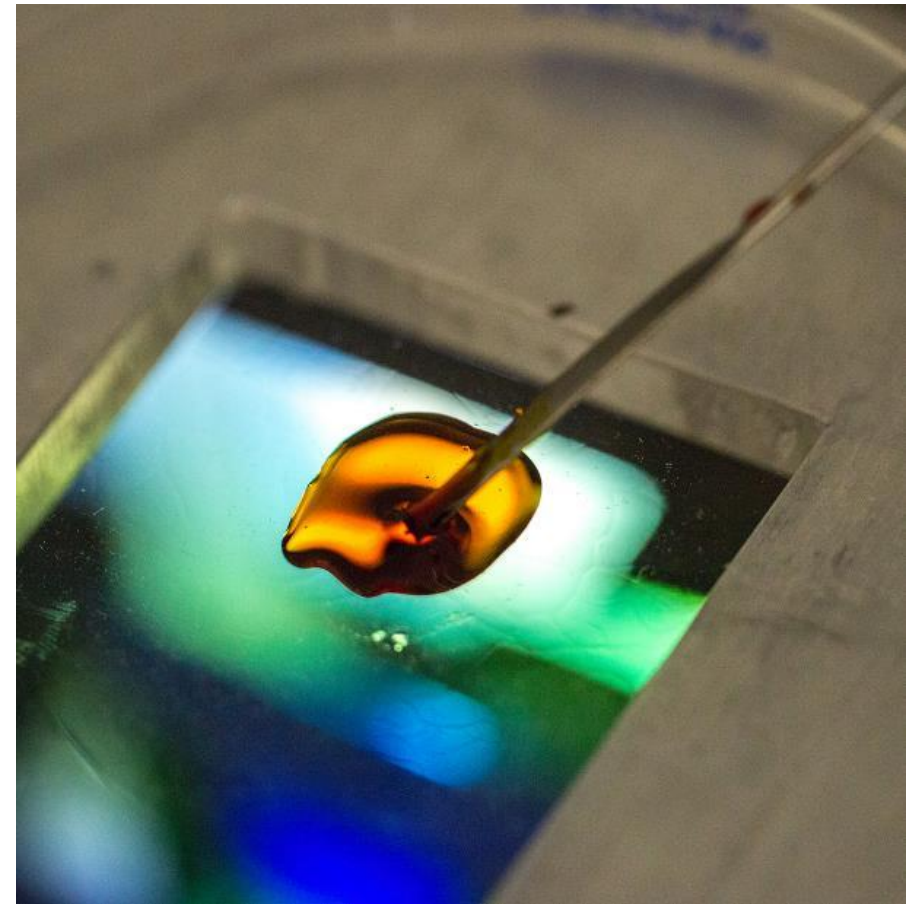
human-centered living environments

Aalto Energy Platform

Sustainable energy solutions

Health Platform

Health and wellbeing



Our extensive infrastructures also serve external research groups and companies

—
Aalto Studios

—
OtaNano

—
Aalto NeuroImaging

—
Science-IT

—
Aalto Ice Tank

—
Bioeconomy infrastructure

—
Metsähovi Radio Observatory



Renewing society through arts and creative practices


A woman with long blonde hair, wearing a dark red long-sleeved top and black pants, is standing on a silver step ladder. She is holding a pencil and drawing a horizontal line on a white wall. The line is a light brown color and extends across the width of the ladder. The background is a plain white wall.

The purpose of our multidisciplinary artistic activities is to find human solutions to important societal issues and build bridges between technology and the economy.

Internationally recognised artistic activities

We present our expertise in major international arts, design and architectural events, such as the Milan Furniture Fair, Hyères Fashion Festival, Paris Photo and numerous film festivals.





'Food made from insects can help to protect the environment, reduce the amount of food thrown away and it may even eliminate hunger.'

Otto Palonen, entrepreneur

Highly regarded continuing education and executive education

Aalto University Executive Education Ltd offers

- business management development services: Aalto EE
- continuing education for experts: Aalto PRO
- entrepreneurship development services: Aalto ENT

About 8 000 students take part in the courses of the Open University each year.



'Made in Aalto University'

A total of 85 000 alumni of whom more than 40 000 have joined the alumni network.

A large number of leading personalities in Finnish industries, culture and arts

More than 40% of Finnish listed companies' CEOs are alumni of Aalto University.

Developing Otaniemi into Aalto City

The Otaniemi campus is being strongly reformed. By 2021, all of the University's core functions will be in Otaniemi, home of the lively Aalto City that supports innovations.



Dipoli is our new main building



The Dipoli building has been refurbished into a showroom, meeting place and a main building for all of Aalto University. It contains workspaces, an auditorium, halls, restaurants, exhibitions spaces and art. The building is designed by architects Raili and Reima Pietilä, and it was completed in 1966.

Towards an innovative society

The image shows a modern lecture hall with a curved ceiling and wooden seating. A large screen is visible at the front of the room. The ceiling has several long, narrow light fixtures. The walls are white with some acoustic panels. The overall design is clean and functional.

Aalto University was established in 2010 as the spearhead project of Finland's university reform. It was given the national mission of strengthening Finland's innovative capability through research, arts and education.

The university was named in honour of *Alvar Aalto*, the famous Finnish architect.

More than 150 years of wellbeing, innovation and entrepreneurship

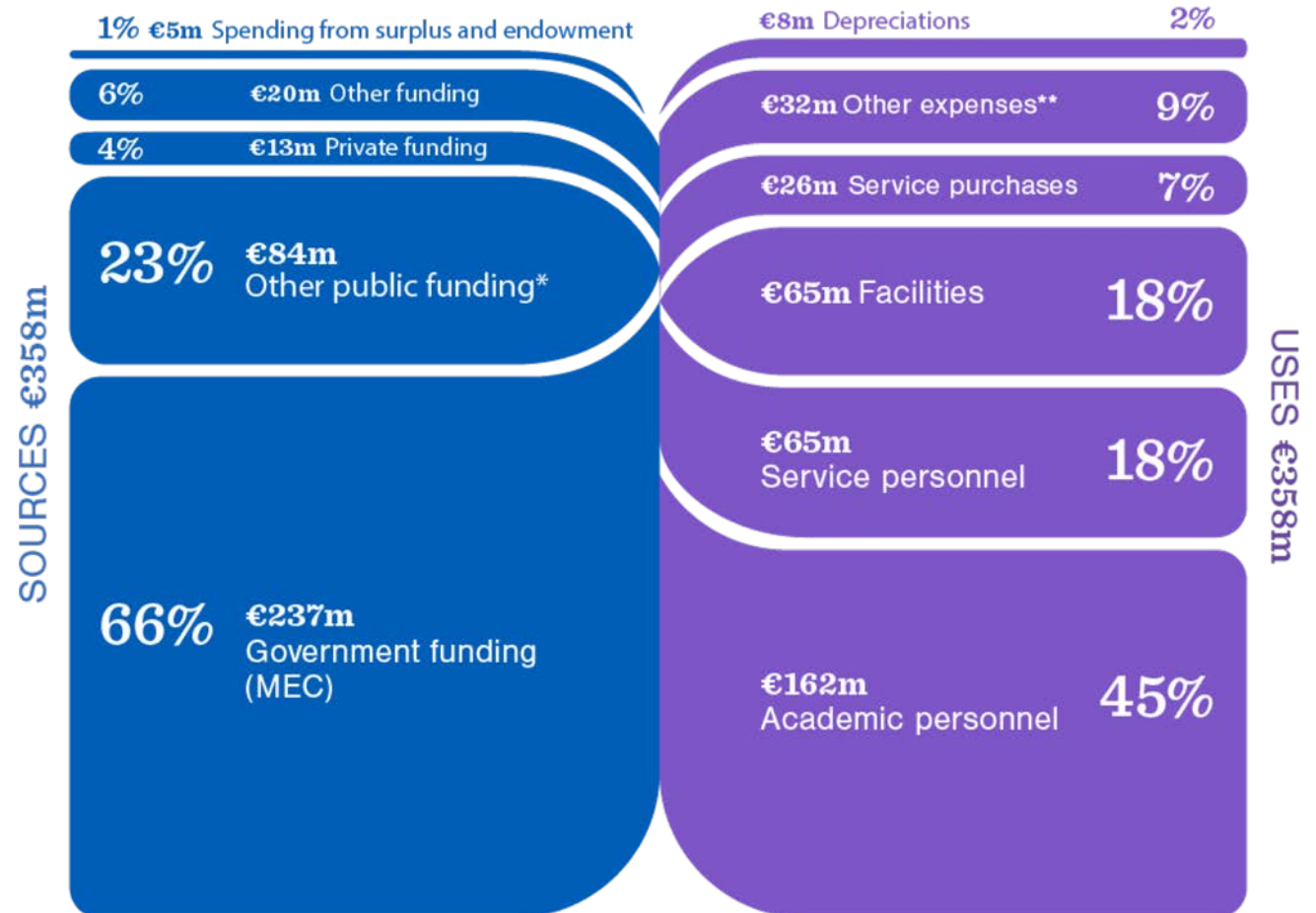
Aalto University can draw on the unique expertise of Helsinki
University of Technology, the University of Art and Design
Helsinki and the Helsinki School of Economics.



Finance

Core funding provided by the state and competitive research funding are the primary sources of revenue for Aalto University.

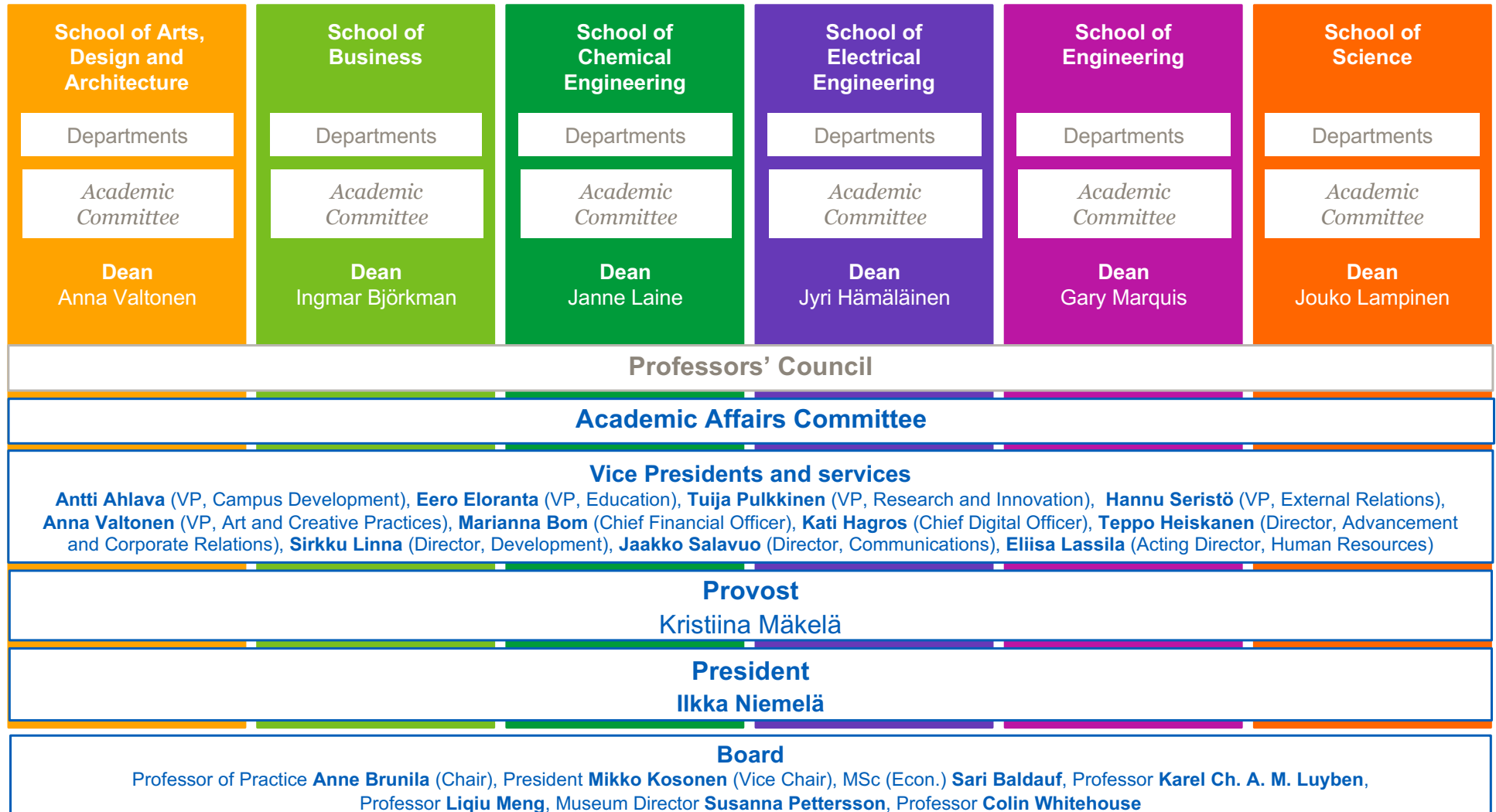
Personnel and facility expenses account for most of the university's expenditure.



* Other public funding consists of funding from the Academy of Finland, Tekes and EU.

** Consists of e.g. travel expenses, materials and supplies.

Organisation



Board



Anne Brunila (Chair)
Professor of Practice



Mikko Kosonen (Vice Chair)
President of the Finnish
Innovation Fund



Sari Baldauf
Master of Science
(Economics and Business
Administration)



Karel Ch. A. M. Luyben
Professor



Liqiu Meng
Professor



Susanna Pettersson
Museum Director



Colin Whitehouse
Professor

Towards a better world.

aalto.fi

