



POLITÉCNICA

UNIVERSIDAD
POLITÉCNICA
DE MADRID

UNIVERSIDAD POLITÉCNICA DE MADRID (UPM) International Relations Office

Paseo Juan XXIII, 11. 28040 Madrid – Spain

www.upm.es

incoming.asia@upm.es

GENERAL INFORMATION

- Established in year 1971
- Merging of centenary schools
- 59 academic departments
- 18 schools
- 10 research institutes
- 200 research groups



ACADEMIC CALENDAR

First Semester

Start date: September

End date: January

Second Semester

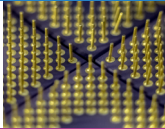
Start date: February

End date: June / July



UPM IN FIGURES

- 35,000 bachelor & master students
- 1,900 PhD students
- 2,900 academic staff
- 1,900 administrative staff
- 415 R&D staff



ACADEMIC OFFER

Fields of study

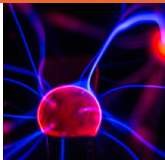
- Architecture & Urban Planning
- Biotechnology
- Sport Sciences
- Organizational Engineering
- Aerospace & Naval Engineering
- Mining & Energy Engineering
- Agricultural & Forest Engineering
- Environmental Engineering
- Civil Engineering
- Biomedical Engineering
- Industrial (Mechanical/Electrical,...) Engineering
- Information & Communication Technologies

	Bachelor	Master	PhD
Architecture & Urban Planning	✓	✓	✓
Biotechnology	✓	✓	✓
Sport Sciences	✓	✓	✓
Organizational Engineering	✓	✓	✓
Aerospace & Naval Engineering	✓	✓	✓
Mining & Energy Engineering	✓	✓	✓
Agricultural & Forest Engineering	✓	✓	✓
Environmental Engineering	✓	✓	✓
Civil Engineering	✓	✓	✓
Biomedical Engineering	✓	✓	✓
Industrial (Mechanical/Electrical,...) Engineering	✓	✓	✓
Information & Communication Technologies	✓	✓	✓



GRADING

- 0 – 4.9: Fail
- 5.0 – 6.9: Pass
- 7.0 – 8.9: Very Good
- 9.0 – 10: Excellent



LANGUAGE OF INSTRUCTION

Bachelor programmes: Spanish /English

(options for undergraduate students also include projects supervised by UPM scholars)

Master programmes: Spanish/English

PhD programmes: Spanish/English

CAMPUSES

- Moncloa Campus
- City Campus
- South Campus
- Montegancedo Campus

SPANISH LANGUAGES COURSES FOR INTERNATIONAL STUDENTS

- Intensive Course of Spanish for Speakers of Other Languages (late August - mid September)
- Spanish Language Course for International Students (Autumn) (Sept - Dec)
- Intensive Course of Spanish for Speakers of Other Languages (late January - mid February)
- Spanish Language Course for International Students (Spring) (February-May)
- UPM International Summer School Spanish Language and Culture Course

PRACTICAL INFORMATION

Living cost: €800-€1000 per month

Transport card: €20 (<26 year olds)

Insurance: €220 mobility period

Accommodation: €450 (shared flat)

2022/23 prices (subject to change)

Application deadlines:

1st semester: June 1st

2nd semester: December 1st

DOCUMENTS REQUIRED FOR ACCEPTANCE

- Nomination from home university international office
- CV
- Transcript of records
- Certificate of language proficiency
- Learning agreement and statement of purpose for projects
- Registration document and photocopy of your passport

All application documents must be emailed by coordinator at home university

FURTHER INFORMATION



Guide for International Students