

TUJP Summer 2023

Tohoku University Japanese Program

[TOP](#) > [For International Students](#) > [Short Programs](#) > [TUJP Summer 2023](#)



[TUJP Summer 2023 Apply now](#)

[Updated on March 8th] In-Person Summer :
Please note that the deadline has been changed from April 24 to April 10.

[TUJP In-Person March 2023](#)

[Overview](#)

[Schedule](#)

[Curriculum](#)

[Eligibility](#)

[Application](#)

[Buddy Program](#)

[COVID-19 Info](#)

[FAQ](#)

[Overview](#) [プログラム概要](#)

Discover the "Real" Japan !

「リアルな日本」を体験しよう！

実践的な日本語講座だけでなく、日本文化演習、東北大学生との協働学習、交流活動など、充実した内容で、短期間で「確実に」参加者の日本語運用能力を上げるプログラムです。

Tohoku University Japanese Program (TUJP) is a short program designed to improve your Japanese proficiency and deepen your understanding of Japan.

The program consists of intensive Japanese lessons with many hands-on activities to practice Japanese. In addition, there are interactive lessons on traditional and modern Japanese culture and society. Moreover, there are collaborative learning activities with local Tohoku University students. Also “buddies” (local students) will make you feel welcome, and assist you during the program. This program, tailored to meet your needs and interests, will help you discover the REAL Japan.

SCHEDULE

① **ONLINE-BEGINNER :**
May 15 - 26, 2023 (2 weeks) 2 ECTS

② **ONLINE-BASIC:**
June 5 - 16, 2023 (2 weeks) 2 ECTS

③ **IN-PERSON:**
July 12 - August 8, 2023 (4 weeks) 6 ECTS

PROGRAM HIGHLIGHTS

- Enhance your communication skills in the Japanese Language & Culture program developed by a leading university in Japan!
日本専修の大学で開発した日本語・日本文化プログラムでコミュニケーション力を確実にアップ
- Learn authentic Japanese language and culture through extracurricular activities with Japanese students
課外での日本人学生との交流で「生きた日本語・日本文化」を習得

CONTACT:
tujp@grp.tohoku.ac.jp

FOR MORE INFORMATION:
<https://www.insc.tohoku.ac.jp/english/short/tujp/>

Tohoku University Japanese Program
東北大学 日本語ショートプログラム

Schedule 日程

We are pleased to offer a variety of TUJP courses in summer 2023.

2023年夏、下記のプログラムを開講予定です。

It may be necessary to change the course content due to the ongoing COVID-19 pandemic.

	Term 1	Term 2	Term 3
Program	Online-Beginner	Online-Basic	In-Person
Schedule スケジュール	May 15 - 26, 2023 JST: 16:20-19:30 2 weeks	June 5 - 16, 2023 JST: 16:20-19:30 2 weeks	July 12 - August 8, 2023 4 weeks
Japanese Level Chart 日本語のレベル ※	Level 1 (入門)	Level 2 (初級)	Level 1 to 6 (入門～上級)
Instruction 講義	Online	Online	In-Person
Eligibility 対象者	Undergraduate and graduate students. Students from non-partner universities are eligible too.	Undergraduate and graduate students. Students from non-partner universities are eligible too.	Full-time undergraduate and graduate students at partner universities of Tohoku University. Partner List Past participants of TUJP-Online can apply even if they are not studying at partner universities of Tohoku University. (応募者多数の場合は選考 Screenings will be performed in the event that we receive many applications.)
Program Fee プログラム料金	JPY 40,000	JPY 40,000	JPY 150,000

※Please refer to the "[Japanese Level Chart](#)"

*For In-Person applications, preference will be given to applicants who have completed the beginner or basic level Online TUJP course.

* For online programs: Zoom will be used for the online class meetings. We encourage you to prepare a device such as a computer (highly recommended), tablet, or smartphone, an internet connection (Wi-Fi and/or wired LAN recommended), webcam, microphone and download the apps.

* For online and in-person programs: Google Classroom will be used as the learning management system.

For International Office Coordinators 大学ご担当者の方へ

We can also design customized programs upon request from your university!

We can develop contents to enhance the skills/competencies that you want your students to acquire (e.g. Japanese speaking and listening, culture & lectures etc.). Programs can be designed for 2 weeks.

Please contact us if you have any questions: tujp@grp.tohoku.ac.jp

ご希望に応じて、貴学の学生様向けプログラムを企画することも可能です。

Curriculum カリキュラム

This program also includes relevant lectures and cultural workshops as well as many opportunities to interact with Tohoku University students.

For TUJP Online : Most of the content will be delivered by real-time sessions. You will have many opportunities to interact with instructors and other participants.

TUJPでは、さまざまな講義やワークショップに加え、東北大学生と交流できる機会がたくさんあります。

オンラインプログラムについても、ほとんどのコンテンツがリアルタイムセッションで実施されます。講師や他の参加者と交流もたくさんあります。

Japanese Language Lessons 日本語学習	TUJP provides students with intensive Japanese language classes to develop their communication skills efficiently, focusing on a variety of interesting topics in everyday life. You will acquire the linguistic and cultural knowledge needed for getting around Japan and carrying out casual conversation with native Japanese speakers. 日常生活や、たくさんの興味深いトピックに関する集中的な日本語学習の授業により、日本語のコミュニケーションスキルを効果的に伸ばします。
Lessons on Japanese Culture & Society 日本文化と社会に関する授業	You can learn about various aspects of Japan through lessons on Japanese culture and society. 日本の文化や社会に関する授業を通して、日本の様々なことを学ぶことができます。 ■In addition to the class hours, students will be required to study outside of class for assignments and group projects etc.
Collaborative Learning & Interaction with Tohoku University Students 東北大学生との国際共修	Opportunities for International Collaborative Learning. You can gain diverse perspectives and communication skills by working with Japanese and international students from different backgrounds in intercultural collaborative learning classes. 日本や他の国の学生と一緒に活動することで、多様な視点やコミュニケーション能力を身につけることができます

Timetable / Course Description

Online-Beginner	Timetable	Course Description (Coming soon)
Online-Basic	Timetable	(Coming soon)
In-Person	Timetable	(Coming soon)

TUJP Buddy Program TUJPバディプログラム

The "TUJP Buddy Program" will run online during this program. Each TUJP student will be matched with one or two local Japanese "buddy" students for cross-cultural exchange and interaction. We believe that current students can help TUJP students by sharing their experiences, providing insights into university life, and responding to questions and concerns. It's also a great way to make friends and practice Japanese!

さらに、東北大学生があなたの「バディ」となって、プログラム中の学習をサポートします。また、東北大学生とのワークショップでは、日本の文化や学生生活にも触れることができます。

Field Trip (Optional)

TUJP In-Person Only: We provide several optional field trips for you to experience and learn about Japanese culture/history in depth at some of the famous local sites.

A participation fee (approx. JPY 6,000~7,000) will apply.(More details will be announced later.)

Credits Awarded 取得単位

On completing the program successfully, students should be eligible to earn 2 ECTS *(TUJP 2-week programs) equivalent.

2週間のプログラム修了者は、2ECTS相当取得できます。

Online-Beginner	Online-Basic	In-Person
2ECTS	2ECTS	6ECTS

- Those who complete two programs (4 weeks total), e.g. Online-Beginner and Online-Basic, are eligible to receive the equivalent of 4 ECTS. Online-Beginner と Online-Basicなど、2つ（合計4週間）のプログラム修了者は、合計4ECTS相当取得できます。

- Those who complete three programs (8 weeks total), Online-Beginner, Online-Basic, and In-Person, are eligible to receive the equivalent of 10 ECTS. Online-Beginner と Online-Basic と In-Personの3つ（合計8週間）のプログラムの修了者は、合計10ECTS相当取得できます。

* 1 ECTS is equivalent to 25 hours of work. These credits are not conferred at Tohoku University, so each participant needs to request credits from their home institution with the certificate we issue.

1ECTSは25時間の学習に相当します。ECTS (European Credit Transfer and Accumulation Systemヨーロッパ単位互換評価制度) とは、ヨーロッパ各国で共通に用いられる大学の単位制度です。

* Since TUJP puts an importance on real-time interactions, students are required to attend more than 85% of all the sessions held in real-time to pass the program. Please also see the FAQ about the handling of absences.

TUJPでは、参加者同士のインタラクションを重視しているため、リアルタイムセッションの85%以上への出席をプログラム合格の要件としています。欠席の場合の対応については、FAQをご確認ください。

Fees 料金

Program	Online-Beginner	Online-Basic	In-Person
Program Fees	JPY 40,000	JPY 40,000	JPY 150,000

For more information about Housing and Cost, check our [FAQ](#).

[In-Person Summer 2023]

Rough Expense Estimate for In-Person Summer 2023 (4 weeks)

Included	Program fee (Tuition fee, textbooks)	JPY 150,000
Not Included	Accommodation fee Urban Castle Kawauchi http://www.uc-kawauchi.com/en-index.html See Note	approx. JPY 80,000
	Daily expenses, food, transportation etc.	approx. JPY 100,000-150,000 (varies depending on your lifestyle)
	Process fee (credit card fees)	approx. JPY 4,000-5,000
	-Airline tickets -Overseas Travel Insurance, which covers a response to COVID-19 related issues. --Domestic Transportation (Narita/Haneda Airport ⇄ Sendai) -Visa issuance (if necessary)	Varies depending on the location of your home country/region

Note: It may be necessary to stay at a hotel instead of Urban Castle Kawauchi depending on future developments in the COVID-19 pandemic. In that case, accommodation fees will increase (approx. JPY 190,000).

(Please note that fees may change depending on exchange rates.)

We will send applicants their results at the same time as the admission notification.

Payment instructions will be sent to those who are accepted. The program fee and processing charge are nonrefundable.

*Valid credit card required: VISA, Mastercard, JCB, AMERICAN EXPRESS.

*It is possible to use a card which carries a name different from that of the applicant.

Scholarship

In-Person and Undergraduate Student Only: Qualified students may apply for a Japan Student Services Organization (JASSO) scholarship of JPY 80,000.

In-Personかつ学部生のみ、JASSO奨学金へ応募可能です。

- [JASSO Scholarship Information](#) (PDF)

- [JASSO Application Form](#) (PDF)

Privacy Policy (GDPR)

Please visit the link below to read about Tohoku University's privacy policy:

[Tohoku University Privacy Policy](#) (PDF)

Eligibility 応募条件

■ University Requirement

Online-Beginner & Online-Basic Eligibility	In-Person Eligibility
Undergraduate and graduate students. A transcript or certificate of enrollment at your university and contact information for the international affairs office at your university are required.	Full-time undergraduate and graduate students at partner universities of Tohoku University. Past participants of TUJP-Online can apply even if they are not studying at partner universities of Tohoku University.

■ Sufficient English ability

- Equivalent to TOEFL® iBT 70 or PBT 520 recommended.

[Required English Proficiency](#)

- Results from other internationally recognized English exams accepted (not required for native speakers).

*All classes and instructions are provided in English or Japanese.

*Note: TOEFL is a registered trademark of Educational Testing Service (ETS). This product is not endorsed or approved by ETS.

■ Japanese Language ability

Program	Online-Beginner	Online-Basic	In-Person
Japanese Level Chart 日本語のレベル	Level 1 (入門)	Level 2 (初級)	Level 1 to 6 (入門～上級)

Japanese Level Chart クラスのレベル

Japanese Level	CEFR/JFS	JLPT	SPOT 90	Grammar 90	Kanji SPOT50	MINNA NO NIHONGO
Level 1 入門(Beginner)	-	-	0-30	-	0-15	Chapter20
Level 2 初級(Basic)	A1	N5	31-55	21-50		
Level 3 初中級 (Pre-intermediate)	A2.1	N4			16-30	Completed
Level 4 中級 (Intermediate)	A2.2	N3	56-80	51-80	31-40	
Level 5 中上級/上級 (Upper Intermediate /Advanced)	B1-B2	N2				
Level 6 上級(Advanced)	B2-C1	N1	81-90	81-90	41-50	

CEFR: Common European Framework of Reference for Languages

JFS : Standard for Japanese-Language Education

JLPT: Japanese Language Proficiency Test

“TTBJ/SPOT90” <http://ttbj1.cegloc.tsukuba.ac.jp/apply/agree/>

* Students must submit their SPOT results, except for those who haven't studied Japanese at all.

日本語を全く勉強していない人を除き、SPOTの結果を必ず提出してください。

[Admission procedure to Placement Test](#)

* Please take your SPOT score into consideration when applying. However, the SPOT score is only an estimate. Even if your score does not meet the criteria for your desired level, you will not be disqualified from applying. The results are used to assign students to the appropriate classes.

Application Form

Individual students can now apply directly. If the application is completed successfully, an automatic message will be sent to your registered email address.

Important Dates	Online-Beginner	Online-Basic	In-Person
Application Deadline 応募締切	16th April, 11:59 p.m.(JST)	16th April, 11:59 p.m.(JST)	10th April, 11:59 p.m.(JST)
Admission Notification Date 受入通知	20th April	20th April	24th April
Payment Deadline 支払締切	25th April, 11:59 p.m.(JST)	25th April, 11:59 p.m.(JST)	24th May, 11:59 p.m.(JST)

*In-Person : Please note that the deadline has been changed from April 24 to April 10.

*In-Person Enrollment Limit

This program is limited to 30 students. In the event that more than 30 people apply, we will conduct a selection process after the application deadline, and announce the results on the Admission Notification Date.

「TUJP In-Person 定員について」定員30名を上回る応募があった場合には、締め切り後に選考し、参加の可否を Admission Notification Date（受入通知）の時点でお知らせします。

■ Required documents

I . A certificate of enrollment at your university or transcript from the previous academic year in English（在籍証明書もしくは成績証明書、英語表記のもの）

II .Submitting Personal ID: Please submit a copy of your passport (photo page).

Those participating in TUJP Online only may submit a copy of their student ID instead.

(身分証明書の提出について: パスポートのコピー（写真のページ）の提出をお願いします。TUJP Onlineのみ参加の方は、学生証でも構いません。）

III . Copy of English language ability certificate and scores (not required for English native speakers)（英語能力証明書：英語ネイティブスピーカーを除く）

IV . Result of online Japanese test:（日本語テスト結果）

Please choose the [“SPOT90 + Grammar90 + 漢字SPOT50” Online Test](#)

(Refer to [the score entry example](#) on the Application Form)

*Note that the results of the online Japanese test are used to balance the number of students in the appropriate classes.

*We will share the participants list with the international affairs office at your university, if requested.

[Important] COVID-19 Information : TUJP In-Person

Even if it is decided to offer TUJP In-Person, the program may be still cancelled later due to the spread of COVID-19. In that case, any travel cancelation fees incurred by the applicants will not be refunded by Tohoku University. TUJP In-Personの実施が決定していても、その後COVID-19の蔓延によりプログラムが中止になる可能性があります。その場合、中止によって生じた費用は、東北大学からは一切返金されません。

One of our criterion for holding the course is that the government lifts immigration restrictions and begins allowing visaless travelers to enter Japan.

However, we will comprehensively consider other factors too. 政府による入国制限がなくなり、ビザなしの旅行者も制限なく入国可能になっていることが、実施可否の判断基準の一つです。その他の状況も総合的に判断して実施の可否を判断します。

Contact コンタクト

Student Exchange Division

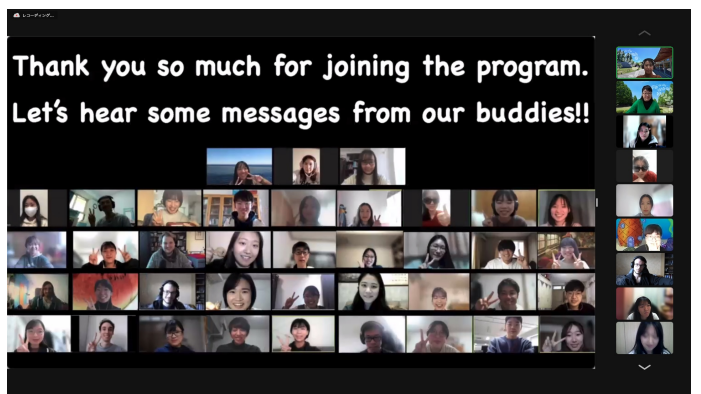
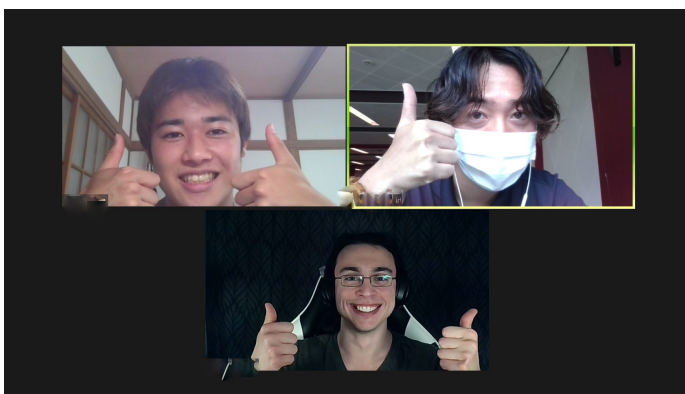
41 Kawachi, Aoba-ku, Sendai, Miyagi, 980-8576 Japan

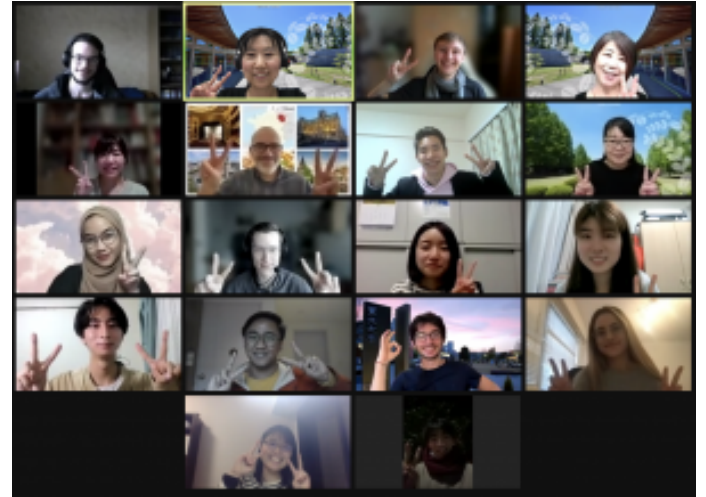
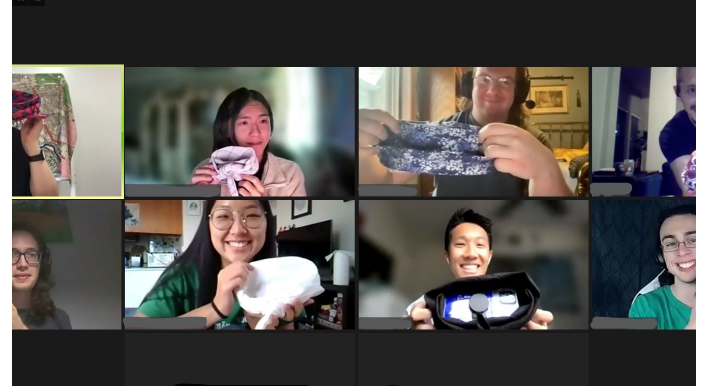
Office Hours: Monday-Friday 8:30-12:30, 13:30-17:15


Tel: +81-22-795-3745

Email: tujp@grp.tohoku.ac.jp


Photo Gallery フォトギャラリー






About Global Learning Center


Overseas Offices


Download Document



Tohoku University's Global Initiative

University Level Agreements

Site Map

Statistics

Department Level Agreements

Map & Directions

Tohoku University's Overseas Study Programs

University Consortia

Academic Staff Database