



POLITÉCNICA

UNIVERSIDAD  
POLITÉCNICA  
DE MADRID

# UNIVERSIDAD POLITÉCNICA DE MADRID (UPM) International Relations Office

Paseo Juan XXIII, 11. 28040 Madrid – Spain

www.upm.es

incoming.asia@upm.es

## GENERAL INFORMATION

- Established in year 1971
- Merging of centenary schools
- 59 academic departments
- 18 schools
- 10 research institutes
- 200 research groups



## ACADEMIC CALENDAR

### First Semester

Start date: September

End date: January

### Second Semester

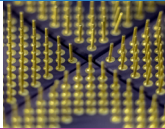
Start date: February

End date: June / July



## UPM IN FIGURES

- 35,000 bachelor & master students
- 1,900 PhD students
- 2,900 academic staff
- 1,900 administrative staff
- 415 R&D staff



## ACADEMIC OFFER

### Fields of study

- Architecture & Urban Planning
- Biotechnology
- Sport Sciences
- Management & Business
- Aerospace & Naval Engineering
- Mining Engineering
- Agricultural & Forestry Engineering
- Engineering and the Environment
- Civil Engineering
- Sustainability & the Environment
- Industrial (Mechanical/Electrical,...) Engineering
- Information & Communication Technologies

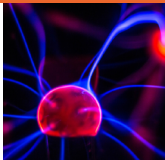
### Bachelor      Master      PhD

✓	✓	✓
✓	✓	✓
✓	✓	✓
✓	✓	✓
✓	✓	✓
✓	✓	✓
✓	✓	✓
✓	✓	✓
✓	✓	✓
✓	✓	✓
✓	✓	✓
✓	✓	✓



## GRADING

- 0 – 4.9: Fail
- 5.0 – 6.9: Pass
- 7.0 – 8.9: Very Good
- 9.0 – 10: Excellent



## LANGUAGE OF INSTRUCTION

Bachelor programmes: Spanish /English

(options for undergraduate students also include projects supervised by UPM scholars)

Master programmes: Spanish/English

PhD programmes: Spanish/English

## CAMPUSES

- Moncloa Campus
- City Campus
- South Campus
- Montegancedo Campus

## SPANISH LANGUAGES COURSES FOR INTERNATIONAL STUDENTS

- Intensive Course of Spanish for Speakers of Other Languages (late August - mid September)
- Spanish Language Course for International Students (Autumn) (Sept - Dec)
- Intensive Course of Spanish for Speakers of Other Languages (late January - mid February)
- Spanish Language Course for International Students (Spring) (February-May)
- UPM International Summer School Spanish Language and Culture Course

## PRACTICAL INFORMATION

Living cost: ~ €800 per month  
Transport card: €20 (<26 year olds)  
Insurance: €199 mobility period  
Accommodation: €350 (shared flat)  
2020/21 prices (subject to change)

**Application deadlines:**

1<sup>st</sup> semester: June 1<sup>st</sup>

2<sup>nd</sup> semester: December 1<sup>st</sup>

## DOCUMENTS REQUIRED FOR ACCEPTANCE

- Nomination from home university international office
- CV
- Transcript of records
- Certificate of language proficiency
- Learning agreement and statement of purpose for projects
- Registration document and photocopy of your passport

All application documents must be emailed by coordinator at home university

## FURTHER INFORMATION



Guide for International Students